

Course Catalog



Table of Contents

All Level Continuing Education	3
ALS / BLS Interface	4
Behavioral Emergencies	5
Big Emergencies	6
Blood Borne Pathogens	7
Crime Scene Awareness	8
Documentation	9
Hazardous Communications	10
Hazardous Materials Awareness	11
HIPAA Training	12
Introduction to Active Shooter Incidents	13
Kinematics of Trauma	14
Large Vessel Occlusion Stroke / FAST-ED	15
Lifting and Moving Patients	16
Medical Orders for Life-Sustaining Treatment	17
Obstetrics / Gynecology	18
Respiratory Emergencies	19
Responding to Terrorist Acts – Chemical Weapons	20
Responding to Terrorist Acts – Explosive / Nuclear	21
Selective Spinal Immobilization	22
SMART Triage System	23
Trauma Point of Entry	24
BLS Continuing Education	25
BLS Skills (Glucometer / Hand Held Nebulizers)	26
Bronchodilators via HHN and CPAP	27
Epinephrine for EMT-B	28
Glucagon for EMT	29
Opiate Overdose and Intranasal Naloxone Administration	30
ALS Continuing Education	31
12-Lead Review	32
ALS Interfacility Initial Program	33
ALS Interfacility Refresher	34
Capnography Demystified	35
Continuous Positive Airway Pressure	36
Difficult Airway (Bougie)	37
EZIO Infusion System	38
Prehospital Use of Ketamine	39
TXA, Ketamine, and Norepinephrine Review	40
Corporate Compliance Education	41
Fire Safety, Prevention and Response	42
Sexual Harassment	43
Workplace Violence	44
EMT National Core Competency Program	45
AEMT National Core Competency Program	50
Paramedic National Core Competency Program	55

All Level Continuing Education



ALS / BLS Interface

ALS / BLS Interface – Distributive (T3) (2.5 Credit Hours)

ALS / BLS Interface Practical Session – Blanket (T2) (1 Credit Hour)

The ALS / BLS Interface program is designed to familiarize all levels of providers of the roles and responsibilities of each level of provider while providing patient care on-scene. The program is in accordance with OEMS AR 2-260. The program is divided into two phases:

Phase One:

Completion of the online portion of the program. Students will complete the online presentation / quiz materials prior to proceeding to phase 2.

Phase Two:

Completion of the practical skill stations based on the information learned online. The practical scenario is presented by an ALS provider in a simulated environment. The simulated environment, at a minimum consists of an ALS ready manikin as well as the appropriate ALS equipment needed to complete the scenario.

ALS/BLS Interface Competency		Student Name	
		Student EMT Number	
Facilitator/Paramedic: Acting as the Medic Partner, please request a IV fluid/drip set combination. As the EMT-Basic partner performs the skill, please mark the skill steps as complete, or incomplete. If the skill step is marked incomplete, please document the reason in the comments section.			
Skill Station			
IV Therapy: Assembly and Preparation of IV Fluids	Complete	Incomplete	Comments
Receives request for fluid and drip set from Medic Partner.			
Check fluid for type, clarity and expiration date.			
Selects appropriate Drip Set as requested by Medic Partner			
Utilizes aseptic technique for setting selected fluid.			
Fills drip chamber to appropriate mark			
Insures selected line is free from air.			
Acting as the Paramedic Partner, and working together as a team, please request from your EMT-Basic partner, retrieval of the Monitor/defibrillator, and request demonstration of lead placement for 3 lead monitoring, and 12 lead monitoring.			
Skill Station			
ECG Monitoring	Complete	Incomplete	Comments
Can identify anatomical landmarks for ECG Monitoring			
Demonstrate's placement of ECG for 3 lead monitoring			
Demonstrate's placement of ECG Leads for 12 lead monitoring			
Demonstrates placement of defibrillation pads.			
Demonstrates turning monitor on - basic overview.			
Skill Station			
Airway Management	Complete	Incomplete	Comments
Demonstrates use of Oxygen delivery systems.			
Demonstrates use of the OPA and NPA.			
Demonstrates BVM use with the advanced airway placed.			
Acting as the Paramedic Partner, please request the assembly of the nebulizer. Ask the EMT-Basic partner to coach the patient in the use of the device.			
Skill Station			
Nebulizer	Complete	Incomplete	Comments
Assemble Nebulizer			
Connects to Oxygen delivery device			
Verbalizes coaching of patient in use of the device.			
Skill Station			
Point of Care Monitoring (if applicable)	Complete	Incomplete	Comments
Demonstrates calibration procedure			
Demonstrates use of Auto Lat			
Demonstrates sharps disposal.			
Demonstrates test sequence as it pertains to the device.			



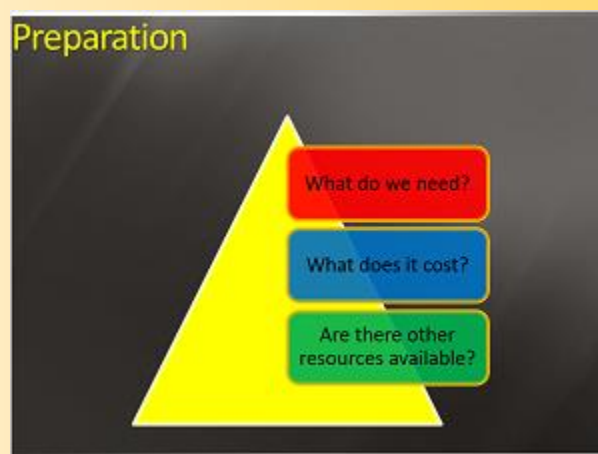
Behavioral Emergencies (2 Credit Hours)

The Behavioral Emergencies program is designed to familiarize the provider with the challenges faced when treating the behavioral emergency patient. Topics discussed include the definition of behavior, pathophysiology (medical / psychiatric), assessment, treatment, legal concerns and Massachusetts applicable laws associated with the behavioral emergency patient. The program is completed exclusively online by completing a written quiz after viewing an on-line presentation.



Big Emergencies (2 Credit Hours)

The Big Emergencies program is designed to familiarize the provider with the challenges faced when treating the bariatric patient. Topics discussed include normal digestive metabolism, pathophysiology, secondary causes and the body system effects of obesity. Providers will learn how to properly assess and treat the bariatric patient as well as complications that can arise from bariatric surgery. The program is completed exclusively online by completing a written quiz after viewing an on-line presentation.



Blood Borne Pathogens (2 Credit Hours)

The Blood Borne Pathogens program is designed to familiarize all levels of providers on OSHA regulations regarding blood borne pathogens, specific diseases, the use of appropriate PPE and post – exposure procedures. The program is completed exclusively online by completing a written quiz after viewing an on-line presentation.

User note: Service specific documents such as safety guidelines and policy and procedure can be added to the online classroom.

.



Crime Scene Awareness (2 Credit hours)

The Crime Scene Awareness program is designed to familiarize all levels of providers on crime scene operations including scene safety, safety tactics, crime scene operations, evidence preservation, legal aspects and EMS documentation of the crime scene. The program is completed exclusively online by completing a written quiz after viewing an on-line presentation.



Documentation (4 Credit Hours)

The Documentation program is designed to familiarize all levels of providers on various aspects of the Patient Care Report. Included in the content are introductory materials (including PCR audiences, challenges and fallacies), EMS Finance (including the EMS billing process, Medicare / Medicaid, medical necessity, medical necessity statements and ethics), Legal responsibilities (including overview of legal principals, and documentation musts), Fundamentals of documentation (including clearness, completeness, correctness, consistency and being concise), Documentation Elements (including data elements, EMS event data, demographics, assessment, examination, treatment, affirmation, narrative construction and time management), Refusals (including legal aspects, interview process, and documentation), Incident Report Documentation, Verbal Reports (including pre-hospital radio reports and face to face reports) and Crime Scene Documentation.

This program also contains a narrative writing exercise which will allow instructors to evaluate narrative writing ability by reviewing user submitted narratives.



Hazardous Communications (2 Credit Hours)

The Hazardous Communications program is designed to familiarize all levels of providers on identifying, and handling hazardous materials that they may come into contact with in the workplace. The program is completed exclusively online by completing a written quiz after viewing an on-line presentation.

User note: Service specific documents such as safety guidelines and policy and procedure can be added to the online classroom.

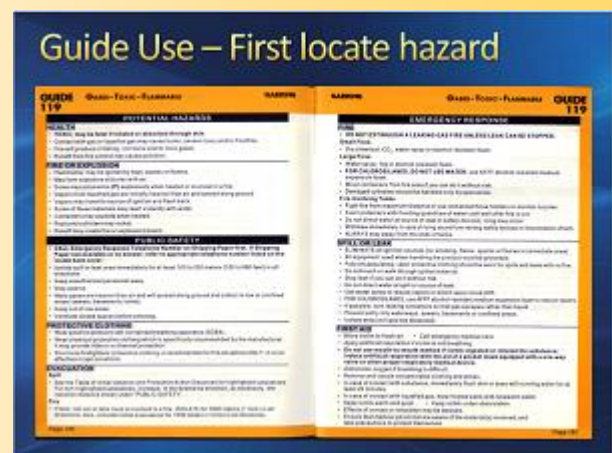
.



Hazardous Materials Awareness (2 Credit Hours)

The Hazardous Materials Awareness program is designed to familiarize all levels of providers on the recognition, identification and management of hazardous materials that may be found on patient care scenes. The program is completed exclusively online by completing a written quiz after viewing an on-line presentation.

User note: Service specific documents such as safety guidelines and policy and procedure can be added to the online classroom.



HIPAA Training (1 Credit Hour)

The HIPAA training program is designed to review the privacy provisions of the Health Insurance Portability and Accountability Act. Company specific policy and procedure can be placed in the classroom for reference. The program is completed exclusively online by completing a written quiz after viewing an on-line presentation.

User note: Service specific documents such as privacy guidelines and policy and procedure can be added to the online classroom.



Introduction to Active Shooter Incidents (2 Credit Hours)

The Introduction to Active Shooter Incidents program is designed to familiarize the provider with EMS roles and responsibilities as they relate to active shooter incidents. The program reviews the planning process, operational principles, safety practices and patient care as they relate to incidents. The program is completed exclusively online by completing a written quiz after viewing an on-line presentation.

Introduction to Active Shooter Incidents / MCI



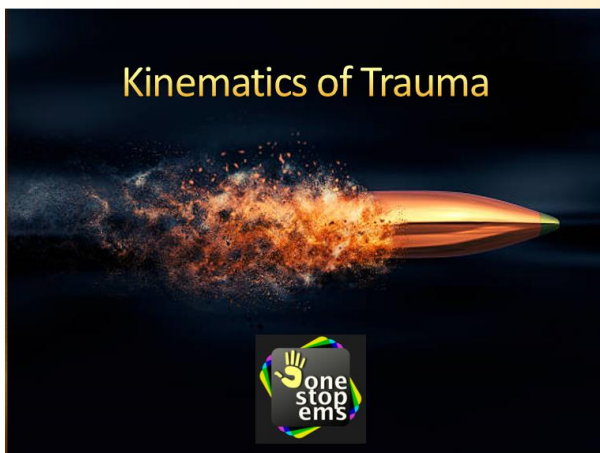
Planning and response

- SOP development
- Planning and practice
- NIMS / ICS
- Integrated training
- Sharing of common terms
- Tactical emergency casualty care
- Personal protective gear
- Secondary devices
- Communications with receiving facilities



Kinematics of Trauma (3 Credit Hours)

The Kinematics of Trauma program is designed to familiarize the provider with the forces that are encountered by the patient during blunt and penetrating trauma, and how to more accurately predict injury patterns. Topics discussed include the concepts of inertia, energy conservation, force, kinetic energy biomechanics of blunt and penetrating trauma. The program is completed exclusively online by completing a written quiz after viewing an on-line presentation.



Large Vessel Occlusion Strokes and FAST-ED (1 Credit Hour)

The Large Vessel Occlusion Stroke program is designed to familiarize the provider with stroke presentation and utilization of the FAST-ED scale to dictate treatment and transport of the patient. Topics discussed include a review of stroke definitive care, the pathophysiology of large vessel occlusion stroke, the FAST-ED assessment tool, stroke mimics, appropriate treatment and transport, the role of EMS, and stroke centers. The program is completed exclusively online by completing a written quiz after viewing an on-line presentation.

Large Vessel Occlusion Stroke and the FAST-ED Tool



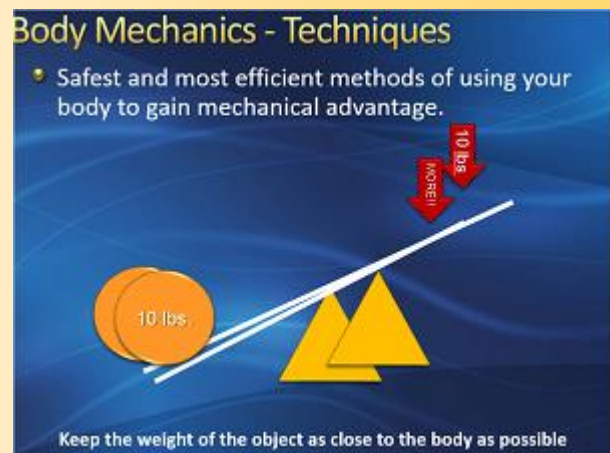
Speech Changes



Lifting and Moving Patients Practical Session – Blanket (T2) (1.5 Hours)

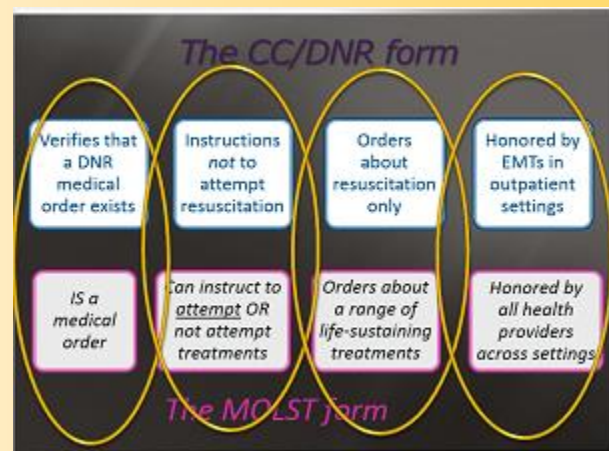
The in-service practical session includes a competency check-off list for proper lifting and moving, stretcher operations, stair-chair operations and scoop stretcher operations. While the application for the program is listed as two hours, each organization can determine the appropriate length of in-service education.

Lifting and Moving Competency		Student Name	
		Student ID Number	
<p>Practicum: Utilize the following skills sheets to evaluate the competency of lifting / moving techniques</p>			
Task Number		Competent	Competent
1	1.1. Explain the correct manual handling principles to three (3) students		
2	2.1. Verify that student is prepared to the other student		
3	3.1. Describe how center of gravity affects load movement at the waist		
4	4.1. Explain proper posture when lifting and/or moving		
5	5.1. Demonstrate with student of support (one person assist)		
6	6.1. Discuss how to brace low back and swelling from waist		
7	7.1. Demonstrate manual lifting / push / stretch		
8	8.1. Demonstrate push / pull with one person assist		
9	9.1. Demonstrate carrying materials with three people, each at angle		
10	10.1. When lifting, explain how to bend, twist, stretch, hip, shoulder, / back straight		
11	11.1. Verify weight is close to center of gravity of the object		
12	12.1. Verify handling is for object, keep back straight		
13	13.1. Ask and instruct student to assist correctly		
Task Number		Competent	Competent
14	14.1. Perform / verbalized proper securing of patient to the stretcher		
15	15.1. Adjusts linear position as needed (maneuvering)		
16	16.1. Moves and reverts the stretcher using the principles of body mechanics		
17	17.1. Moves stretcher to a non-weight area (the principles of body mechanics)		
18	18.1. Converts stretcher to ambulatory apparatus		
19	19.1. Demonstrates patient removal from the ambulance		
Task Number		Competent	Competent
20	20.1. Position and secure the patient		
21	21.1. Positions and adjusts the brace to proper length		
22	22.1. Secures stretcher / apparatus secured		
23	23.1. Moves back without patient from back		
24	24.1. Moves back without patient from back		
25	25.1. Patient is apparatused, secured to the device		
26	26.1. Moves to backboard to the stretcher using the principles of body mechanics		
27	27.1. Patient is secured to ambulance		
Task Number		Competent	Competent
28	28.1. Secures stretcher and secures into position		
29	29.1. Properly secures the patient		
30	30.1. Ask to move the patient, carefully up and down stairs with partner		
31	31.1. Perform on stairs with proper body mechanics		
32	32.1. Secures patient to the stretcher and secures		



Medical Orders for Life-Sustaining Treatment (2 Credit Hours) (OEMS 2 credit hours)

The Medical Orders for Life-Sustaining Treatment program is designed to familiarize all levels of providers on the newly introduced MOLST form. The EMS provider is given tools to recognize a valid MOLST form and to make treatment decisions based on this medical order. The program is completed exclusively online by completing a written quiz after viewing an on-line presentation.



Obstetrics / Gynecology (3 Credit Hours) (OEMS 3 credit hours)

The Obstetrics / Gynecology program is designed to familiarize EMS providers on with the reproductive anatomy and physiology, the process of normal child birth, pre-delivery emergencies, abnormal birthing presentation, neonatal resuscitation, and common gynecological emergencies. The program is completed exclusively online by viewing a video presentation and completing a written examination.



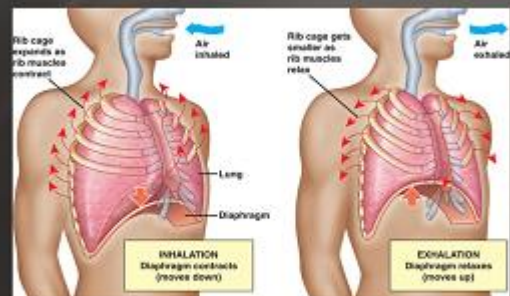
Respiratory Emergencies (3 Credit Hours)

The Respiratory Emergencies program is designed to familiarize EMS providers on the mechanics of respiration, treatment modalities, pathophysiology, assessment and treatment for patients experiencing a respiratory emergency. The program is completed exclusively online by viewing a video presentation and completing a written examination.

Respiratory Emergencies



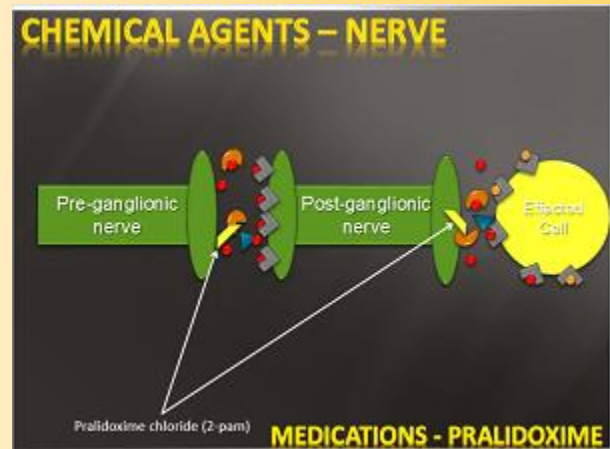
Respiratory Mechanics



Ventilation

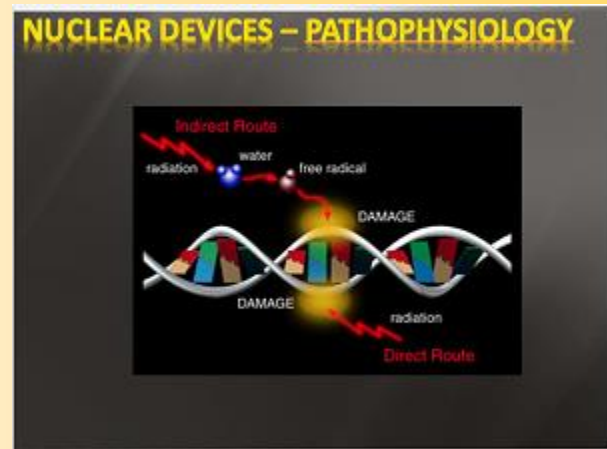
Responding to Terrorist Acts – Chemical Weapons (3 Credit Hours)

The Chemical Weapons program is designed to familiarize EMS providers on the history of chemical warfare, different classifications of chemical agents, the pathophysiology, recognition and treatment of specific agents. The program is completed exclusively online by viewing a video presentation and completing a written examination.



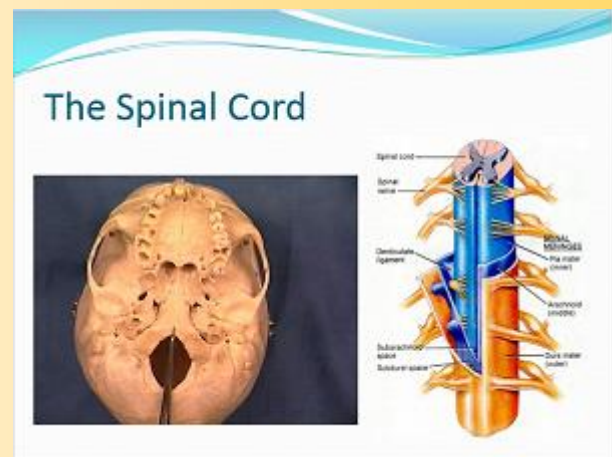
Responding to Terrorist Acts – Explosive / Nuclear (3 Credit Hours)

The Explosive / Nuclear weapons program is designed to familiarize EMS providers on the history of terrorist warfare, the properties of explosive / nuclear devices, the pathophysiology, recognition and treatment of specific devices. The program is completed exclusively online by viewing a video presentation and completing a written examination.



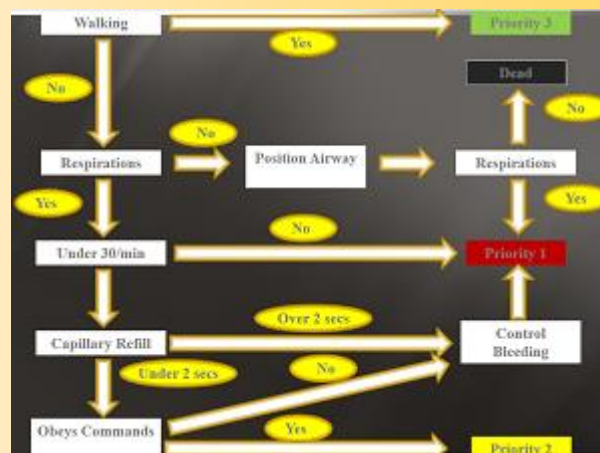
Selective Spinal Immobilization (2 Credit Hours)

The SSI program is designed to familiarize EMS providers on the anatomy and physiology of the spine, assessment of traumatic spinal injury, specific spine disorders, and the use of the Massachusetts Selective Spinal Immobilization Protocol. The program is completed online by viewing a presentation and instructional materials. The provider will complete a written quiz after reviewing the course materials.



SMART Triage System (1 Credit Hour)

The SMART Triage System program is designed to familiarize all levels of providers on the use of the SMART triage tags which has been adopted as the standard MCI tag in Massachusetts. The program reviews MCI criteria, patient assessment criteria to categorize patients, and the overall process on an MCI scene. The program is completed exclusively online by completing a written quiz after viewing an on-line presentation.



Trauma Point of Entry (1 Credit Hour)

The Trauma Point of Entry plan is designed to present the 2011 Trauma Point of Entry Guidelines. The program includes the CDC Field Triage Decision Scheme, its adopted components and its history of change. Regional Trauma Point of Entry Plans are included in the course material. The program is completed exclusively online by completing a written quiz after viewing an on-line presentation.

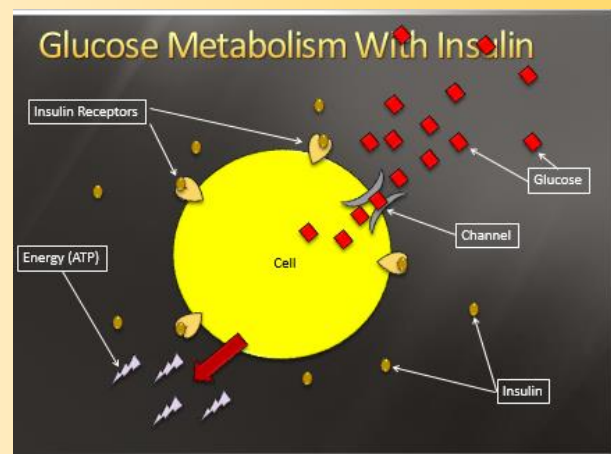


BLS Continuing Education



BLS Skills (Glucometer / Hand Held Nebulizers) (1.5 Credit Hours)

The BLS Skills program is designed to educate pre-hospital providers on the use of a glucometer and the administration of medications via hand-held nebulizer. Included in the program is a review of altered mental status, glucose metabolism, diabetic disease process, characteristics of oral glucose, use of a glucometer, mechanics of ventilation, obstructive airway disease, characteristics of albuterol, med administration using a hand-held nebulizer, and OEMS protocol for albuterol administration. The program is completed exclusively online by completing a written quiz after viewing an on-line presentation.



Bronchodilators via HHN and CPAP (1.5 Credit Hours)

The bronchodilators via HHN and CPAP program is designed to educate providers on the disease processes of asthma, COPD and Heart failure. Discussion and demonstration on the use of a hand –held nebulizer and continuous positive airway pressure device. The program is completed exclusively online by completing a written quiz after viewing an on-line presentation.

BLS Skills

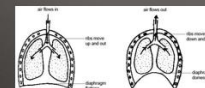
Bronchodilators via Hand Held Nebulizer

CPAP

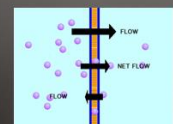
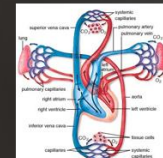


Respiratory Mechanics

Ventilation



Diffusion

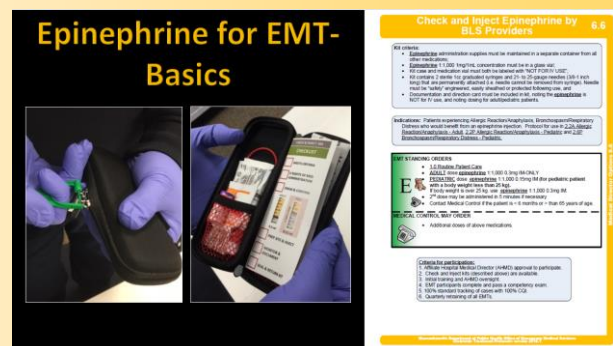


Perfusion

Physiology

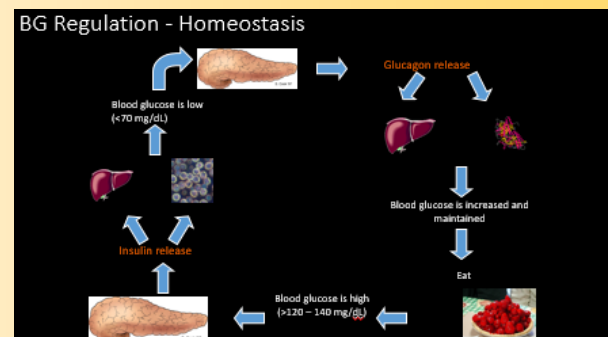
Epinephrine for EMT-B (0 Credit Hours)

The Epinephrine for EMTs program is designed to aid in compliance with the Massachusetts Check and Inject Epinephrine by BLS Providers (6.6). Topics include protocol review, risks vs. benefits, review of pilot studies, anaphylaxis review, review of epi administration using check and inject kits, and patient assessment pre and post administration. The program is completed exclusively online by completing an online presentation and a written quiz



Glucagon for EMT (0.5 Credit Hours)

The Glucagon for EMT program is designed to familiarize the EMT-B with the administration of intramuscular glucagon for the hypoglycemic patient. Topics covered include glucose homeostasis, type I diabetes, hypoglycemia, glucagon medication profile, and the relationship to statewide treatment protocol. The program is completed exclusively online by completing a written quiz after viewing an on-line presentation.



Opiate Overdose and Intranasal Naloxone Administration

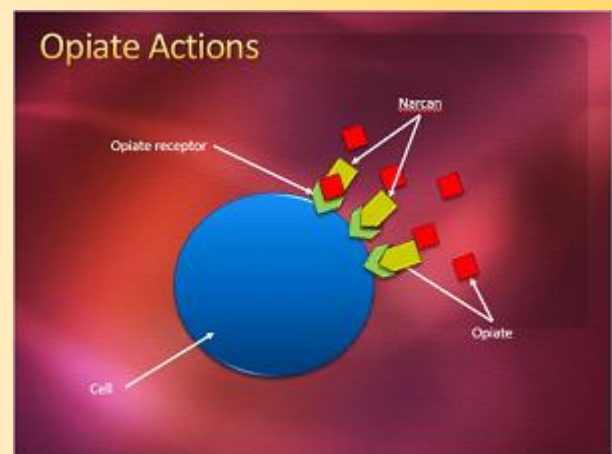
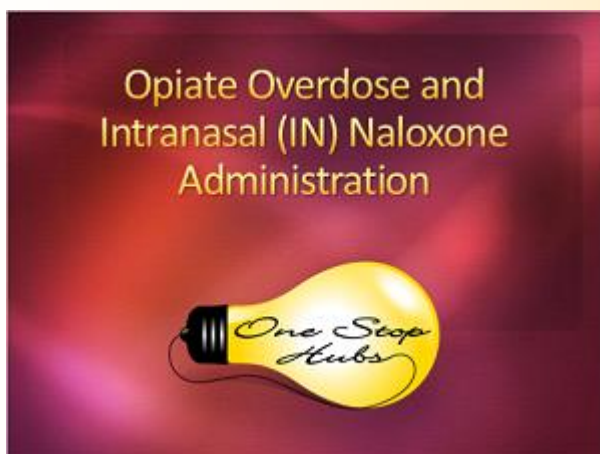
Opiate Overdose and Intranasal Naloxone Admin – Distributive (T3) (1 Hour)

Opiate Overdose and Intranasal Naloxone Admin Practical Session – Blanket (T2) (1 Hour)

The Intranasal Naloxone program is designed to familiarize BLS providers with the clinical presentation of an opiate overdose, the physiology of opiate agonists and antagonists, the complete drug profile for Naloxone, benefits and disadvantages of the intranasal route and the assessment / treatment of the patient with suspected opiate overdose.

There is a practical component of the program in which the student must demonstrate the ability to assemble the intranasal device and administer the medication.

The online and practical components must be completed prior to credits being awarded.



ALS Continuing Education



12 –Lead Review

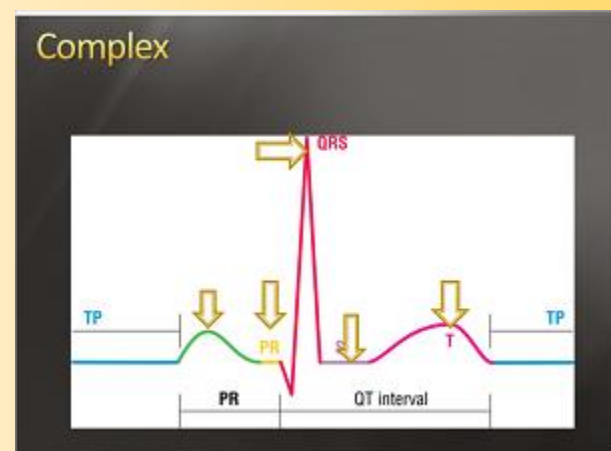
12-Lead EKG Review – Distributive (T3) (3 Hours)

12-Lead EKG Review Practical – Blanket (T2) (1 Hour)

The 12-Lead review program is designed to refresh current EMS providers on the interpretation of 12-Lead EKGs. The program concentrates on the electrical anatomy and physiology, lead placement, MI recognition, and MI mimics. The course was developed in response to the Office of Emergency Medical Services mandated requirement for on-going 12-lead interpretation education.

The online session is approved for three (3) credit hours and is completed by viewing a presentation and successfully completing an online quiz.

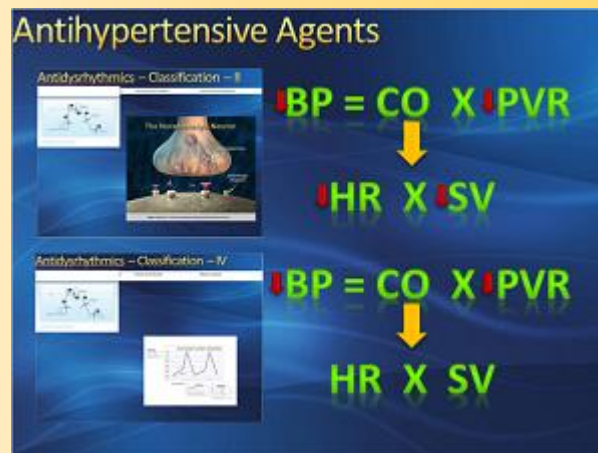
The one (1) hour session is a practical skill demonstration utilizing sample EKGs. A qualified ALS instructor administers a scenario and elicits feedback from the student. The completed roster is submitted to OEMS for credits to be awarded.



ALS Interfacility Transport Program (11 Credit Hours)

The ALS Interfacility program is divided into four modules. The first module covers ALS Interfacility regulations / rules as outlined in AR 5-509. The second module is a comprehensive review of the medications that have been approved in the ALS Interfacility protocol and how to properly monitor and deliver the medications. The third module reviews laboratory data, blood products, respiration and ventilator functioning and chest tube monitoring. The fourth module is a review of agency specific equipment and protocol.

Module 1-3 is presented online and each module requires completion of a competency quiz to proceed to the next module. The student will must pass the quiz with a score of 80% or higher in less than three attempts for each module.



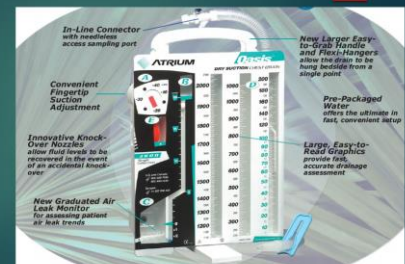
ALS Interfacility Refresher (2 Credit Hours)

The ALS Interfacility refresher program is a singular module for participants who have complete the full Interfacility program in the past. The program reviews information from the full course including regulation and protocol, medications approved for administration, patient treatment and the skills approved for the paramedic. The program is completed exclusively online by completing a written quiz after viewing an on-line presentation.

Inter Facility Transport (IFT)

REFRESHER

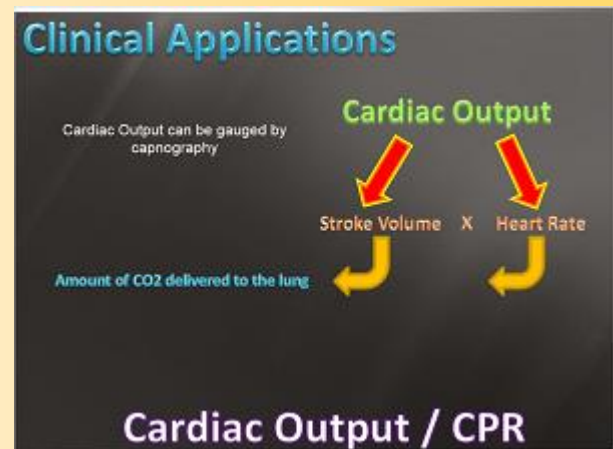
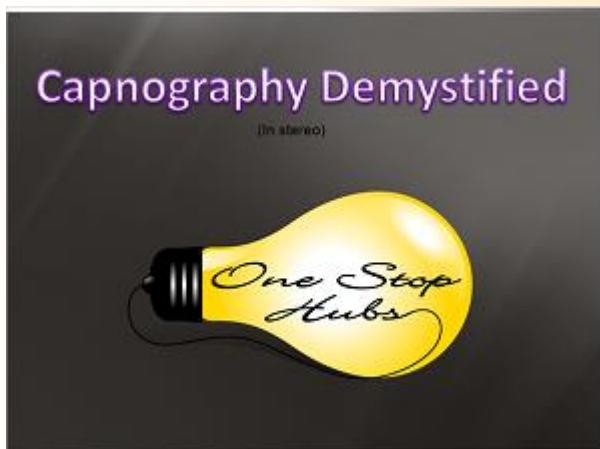
Chest Tubes



Capnography Demystified (1 Credit Hour)

The capnography program is designed to educate paramedics on the indications for capnography, interpretation of readings, normal results, abnormal results associated with disease processes and use with non-breathing patients. The program is completed exclusively online by completing a written quiz after viewing an on-line presentation.

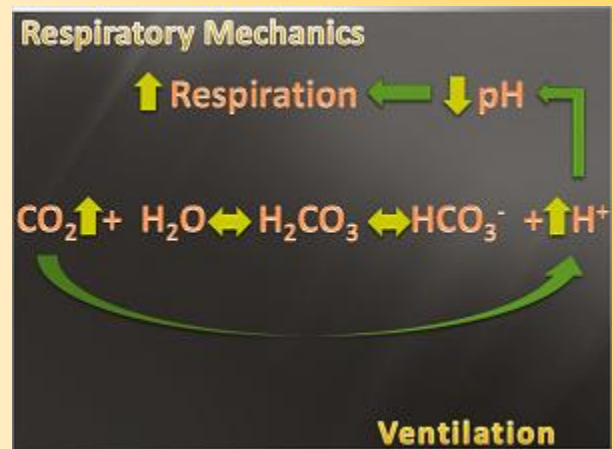
User note: Device specific information can be added to the online classroom.



Continuous Positive Airway Pressure – CPAP (2 Credit Hours)

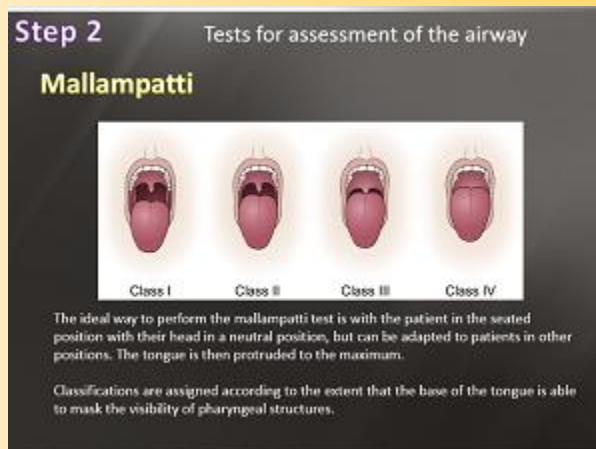
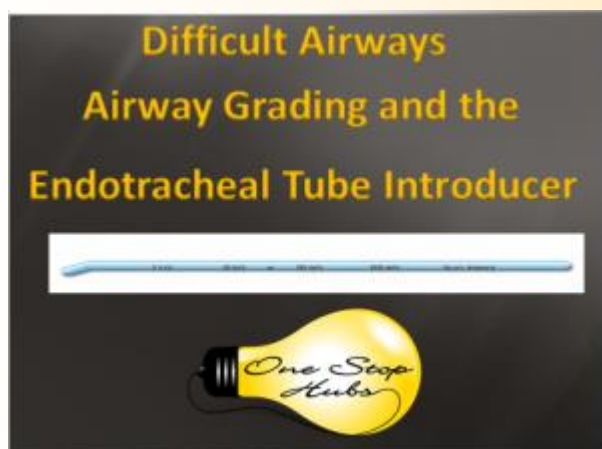
The CPAP program is designed to educate ALS providers about the anatomy and physiology of the respiratory system, the recognition of CHF and COPD, the indications and contraindications of CPAP, therapeutic advantages of CPAP and the use of specific devices. The program is completed exclusively online by completing a written quiz after viewing an on-line presentation.

User note: Device specific information can be added to the online classroom.



Difficult Airway (Bougie) (1 Credit Hour)

The Difficult Airway / Airway Introducer program is designed to familiarize the paramedic with grading of airway structures using common scores, common disease processes that can make intubation more difficult, and the proper use of an airway introducer device. The program is completed exclusively online by completing a written quiz after viewing an on-line presentation.



EZ IO Intraosseous Infusion System (2 Credit Hours)

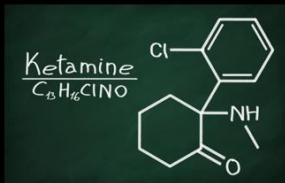
The EZ IO Intraosseous Infusion System program is designed to familiarize ALS providers on the indications, contraindications, use of the EZ IO device, patient monitoring, and medication administration. The program is completed exclusively online by viewing manufacturer produced video and instructional materials. The provider will complete a written quiz after reviewing the course materials.



Prehospital Use of Ketamine (0.5 Credit Hours)

The Prehospital Use of Ketamine program is designed to familiarize ALS providers on the appropriate use of ketamine in the prehospital environment. Topics in the program include a review of ketamine's history of use, pharmacology, drug profile, advantages, disadvantages, and relationship to statewide treatment protocol. The program is completed exclusively online by viewing a presentation and completing a written examination.

Prehospital Use of Ketamine



2.4

Behavioral Emergencies Adult & Pediatric

P

PARAMEDIC STANDING ORDERS

- Initiate an IV of Normal Saline at a KVO rate.
- Apply cardiac monitor if clinically feasible, obtain 12 lead ECG-manage dysrhythmias per protocol.
- Position patient to ensure breathing is not impaired.
- If providing medication to patients >70 years of age, limit dose.

ADULT STANDING ORDERS

- **Haloperidol** 5 mg IM; and/or
- **Lorazepam** 2mg IV/IO/IM; or
- **Midazolam** 2-6 mg IV/IO/IM/IN
- **Ketamine** 4mg/kg IM only, to a maximum dose of 400mg IM only, as a single dose.
- **Note:** In patients >70 years of age, limit medication to half these doses.

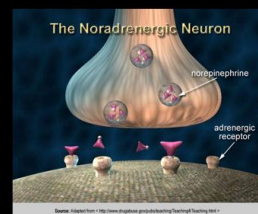
TXA, Ketamine, and Norepinephrine Review (1 Credit Hour)

The TXA, Ketamine, and Norepinephrine Review program is designed to familiarize ALS providers with the proper use of these medications. The program includes statewide treatment protocol and drug profiles for TXA, Ketamine and Norepinephrine. The program is completed exclusively online by completing a written quiz after viewing an on-line presentation.

TXA / Ketamine / Norepinephrine Review



Vasopressors



Corporate Compliance Education



Fire Safety, Prevention and Response

The Fire Safety, Prevention and Response program is designed to familiarize all members of an organization on the characteristics of fire, fire safety techniques, fire prevention, and response to a fire emergency. The program is completed exclusively online by completing a written quiz after viewing an on-line presentation.

User note: Service specific documents such as safety guidelines and policy and procedure can be added to the online classroom.



Sexual Harassment

The Sexual Harassment program defines sexual harassment, reviews company liability and policy, the consequences of harassment claims, and employee responsibilities. Scenarios are presented to make clear what constitutes sexual harassment.

User note: Company specific policy on sexual harassment can be incorporated into the course materials.



Scenario #1

Julie no longer wants to date John and has told him so.

John, however, continually behaves as if they are still dating. He phones her for dates. At work he comes up to her and touches Julie in ways that are no longer welcomed by her. John is really making a pest of himself!

John may be unaware because of their past relationship that what he is doing is really not welcomed by Julie; but he had better catch on soon!

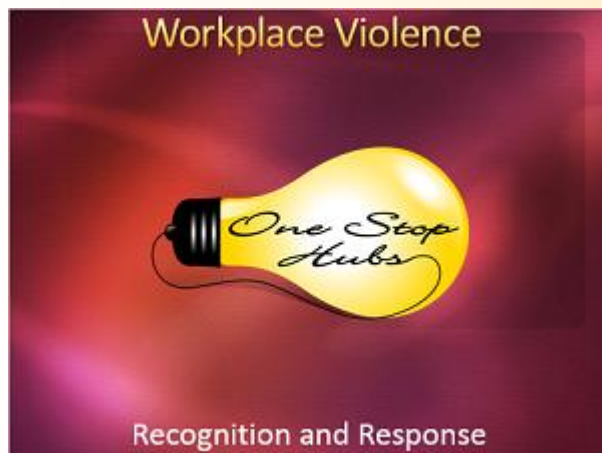
John's conduct is affecting Julie's ability to do her job. John's behavior, because it is sexual in nature and is repeated and not wanted, therefore.....

It is **SEXUAL HARASSMENT**. A "hostile environment"

Workplace Violence

The Workplace Violence program (recognition and response) includes the definition, historical perspectives and statistics of workplace violence. Risk factors, types, prevention and response are also addressed. A template for workplace violence policy and procedure development is included with the course.

User note: Company specific policy on workplace violence can be incorporated into the course materials.



EMT-B National Core Competency Program



EMT-B National Core Competency Program

National Continued Competency Program

Airway, Respiration and Ventilation

Airway, Respiration, and Ventilation

The EMS Provider Airway, Respiration and Ventilation section covers materials outlined in the National Core Competency Program. This module contains the following content:

Courses / Hours:

Course	Distributive / VILT	Practical
Ventilation	0.5 hour	0.5 hour
Oxygenation	0.25 hour	0.25 hour

National Continued Competency Program

Cardiovascular

Cardiovascular

The EMS Provider Cardiovascular section covers materials outlined in the National Core Competency Program. This module contains the following content:

Courses / Hours:

Course	Distributive / VILT	Practical
Cardiac Arrest	0.25 hour	1.75 hour
Pedi Cardiac Arrest	0.5 hour	1.5 hour
Post Resuscitation	0.5 hour	N/A
Stroke	1.0 hour	N/A
Ventricular Assist Devices	0.5 hour	N/A

EMT-B National Core Competency Program

National Continued Competency Program

Medical

Medical

The EMS Medical section covers materials outlined in the National Core Competency Program. This module contains the following content:

Courses / Hours:

Course	Distributive / VILT	Practical
Endocrine Emergencies	0.75 hour	0.25 hour
Immunological Emergencies	0.5 hour	0.25 hour
Infectious Disease	0.5 hour	N/A
Neurological Emergencies	0.5 hour	N/A
Obstetrical Emergencies	0.5 hour	N/A
Pain Management	0.5 hour	N/A
Psychiatric / Behavioral Emergencies	0.5 hour	0.25 hour
Special Healthcare Needs	1.5 hour	N/A
Toxicology	0.5 hour	0.25 hour

EMT-B National Core Competency Program

National Continued
Competency Program

Operations

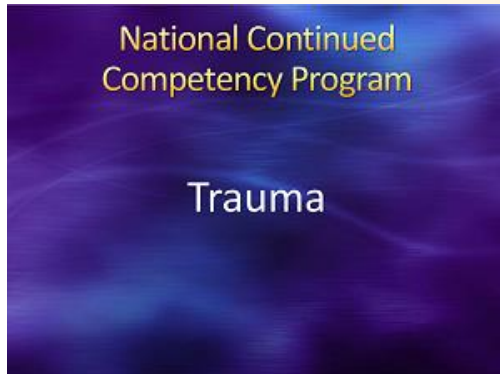
Operations

The EMS Operations section covers materials outlined in the National Core Competency Program. This module contains the following content:

Courses / Hours:

Course	Distributive / VILT	Practical
Ambulance Safety	0.5 hour	N/A
At-Risk Populations	0.5 hour	N/A
Crew Resource Management	1.0 hour	N/A
EMS Culture of Safety	0.5 hour	N/A
EMS Provider Hygiene, Safety and Vaccinations	0.5 hour	N/A
EMS Research	0.5 hour	N/A
Evidence Based Guidelines	0.5 hour	N/A
Field Triage	0.5 hour	0.5 hour
Pediatric Transport	0.5 hour	N/A

EMT-B National Core Competency Program



Trauma

The Trauma section covers materials outlined in the National Core Competency Program. This module contains the following content:

Courses / Hours:

Course	Distributive / VILT	Practical
CNS Injury	0.5 hour	N/A
Hemorrhage Control	0.5 hour	0.25 hour
Trauma Triage	0.5 hour	N/A

The materials contained in the presentations exceed these minimum requirements. This program can be completed independently for con-ed credits or as part of the National Core Competency Program on your hub site.

The practical component of this program is included in the course materials and must be completed prior to credits being granted.

Upon Completion of the Online Session, the provider can be submitted for continuing education credit.

AEMT National Core Competency Program



AEMT National Core Competency Program

National Continued Competency Program

Airway, Respiration and Ventilation

Airway, Respiration, and Ventilation

The EMS Provider Airway, Respiration and Ventilation section covers materials outlined in the National Core Competency Program. This module contains the following content:

Courses / Hours:

Course	Distributive / VILT	Practical
Ventilation	1.0 hour	1.0 hour
Oxygenation	0.25 hour	0.25 hour

National Continued Competency Program

Cardiovascular

Cardiovascular

The EMS Provider Cardiovascular section covers materials outlined in the National Core Competency Program. This module contains the following content:

Courses / Hours:

Course	Distributive / VILT	Practical
Acute Coronary Syndrome	0.75 hour	0.25 hour
Cardiac Arrest	0.25 hour	1.75 hour
Pedi Cardiac Arrest	0.5 hour	1.5 hour
Post Resuscitation	0.5 hour	N/A
Stroke	1.0 hour	N/A
Ventricular Assist Devices	0.5 hour	N/A

AEMT National Core Competency Program

National Continued Competency Program

Medical

Medical

The EMS Medical section covers materials outlined in the National Core Competency Program. This module contains the following content:

Courses / Hours:

Course	Distributive / VILT	Practical
Endocrine Emergencies	0.75 hour	0.25 hour
Immunological Emergencies	0.5 hour	N/A
Infectious Disease	0.5 hour	N/A
Medication Delivery	0.5 hour	0.5 hour
Neurological Emergencies	0.5 hour	N/A
Obstetrical Emergencies	0.5 hour	N/A
Pain Management	1.0 hour	N/A
Psychiatric / Behavioral Emergencies	0.75 hour	0.25 hour
Special Healthcare Needs	1.0 hour	N/A
Toxicology	0.5 hour	N/A

AEMT National Core Competency Program

National Continued
Competency Program

Operations

Operations

The EMS Operations section covers materials outlined in the National Core Competency Program. This module contains the following content:

Courses / Hours:

Course	Distributive / VILT	Practical
Ambulance Safety	0.5 hour	N/A
At-Risk Populations	0.5 hour	N/A
Crew Resource Management	1.0 hour	N/A
EMS Culture of Safety	0.5 hour	N/A
EMS Provider Hygiene, Safety and Vaccinations	0.5 hour	N/A
EMS Research	0.5 hour	N/A
Evidence Based Guidelines	0.5 hour	N/A
Field Triage	0.5 hour	0.5 hour
Pediatric Transport	0.5 hour	N/A

AEMT National Core Competency Program



Trauma

The Trauma section covers materials outlined in the National Core Competency Program. This module contains the following content:

Courses / Hours:

Course	Distributive / VILT	Practical
CNS Injury	1.0 hour	N/A
Fluid Resuscitation	0.5 hour	N/A
Hemorrhage Control	0.5 hour	0.25 hour
Trauma Triage	1.0 hour	N/A

The materials contained in the presentations exceed these minimum requirements. This program can be completed independently for con-ed credits or as part of the National Core Competency Program on your hub site.

The practical component of this program is included in the course materials and must be completed prior to credits being granted.

Upon Completion of the Online Session, the provider can be submitted for continuing education credit.

Paramedic National Core Competency Program



Paramedic National Core Competency Program

National Continued Competency Program

Airway, Respiration and Ventilation

Airway, Respiration, and Ventilation

The EMS Provider Airway, Respiration and Ventilation section covers materials outlined in the National Core Competency Program. This module contains the following content:

Courses / Hours:

Course	Distributive / VILT	Practical
Capnography	0.5 hour	0.5 hour
Ventilation	1.0 hour	1.0 hour
Oxygenation	0.5 hour	N/A

National Continued Competency Program

Cardiovascular

Cardiovascular

The EMS Provider Cardiovascular section covers materials outlined in the National Core Competency Program. This module contains the following content:

Courses / Hours:

Course	Distributive / VILT	Practical
Acute Coronary Syndrome	0.75 hour	0.25 hour
Cardiac Arrest	0.5 hour	1.5 hour
Congestive Heart Failure	0.5 hour	N/A
Pedi Cardiac Arrest	1.0 hour	1.5 hour
Post Resuscitation	0.5 hour	N/A
Stroke	1.5 hour	N/A
Ventricular Assist Devices	0.5 hour	N/A

Paramedic National Core Competency Program

National Continued Competency Program

Medical

Medical

The EMS Medical section covers materials outlined in the National Core Competency Program. This module contains the following content:

Courses / Hours:

Course	Distributive / VILT	Practical
Endocrine Emergencies	0.75 hour	0.25 hour
Immunological Emergencies	0.5 hour	N/A
Infectious Disease	0.5 hour	N/A
Medication Delivery	0.5 hour	0.5 hour
Neurological Emergencies	0.5 hour	N/A
Obstetrical Emergencies	0.5 hour	N/A
Pain Management	1.0 hour	N/A
Psychiatric / Behavioral Emergencies	0.75 hour	0.25 hour
Special Healthcare Needs	2.0 hour	N/A
Toxicology	0.5 hour	N/A

Paramedic National Core Competency Program

National Continued
Competency Program

Operations

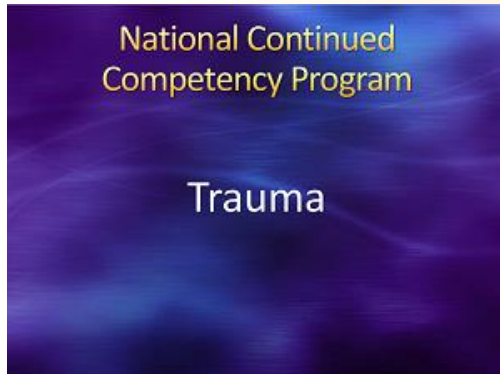
Operations

The EMS Operations section covers materials outlined in the National Core Competency Program. This module contains the following content:

Courses / Hours:

Course	Distributive / VILT	Practical
Ambulance Safety	0.5 hour	N/A
At-Risk Populations	1.0 hour	N/A
Crew Resource Management	1.0 hour	N/A
EMS Culture of Safety	0.5 hour	N/A
EMS Provider Hygiene, Safety and Vaccinations	0.5 hour	N/A
EMS Research	1.0 hour	N/A
Evidence Based Guidelines	0.5 hour	N/A
Field Triage	0.5 hour	0.5 hour
Pediatric Transport	0.5 hour	N/A

Paramedic National Core Competency Program



Trauma

The Trauma section covers materials outlined in the National Core Competency Program. This module contains the following content:

Courses / Hours:

Course	Distributive / VILT	Practical
CNS Injury	1.0 hour	N/A
Fluid Resuscitation	0.5 hour	N/A
Hemorrhage Control	0.5 hour	0.25 hour
Trauma Triage	1.0 hour	N/A

The materials contained in the presentations exceed these minimum requirements. This program can be completed independently for con-ed credits or as part of the National Core Competency Program on your hub site.

The practical component of this program is included in the course materials and must be completed prior to credits being granted.

Upon Completion of the Online Session, the provider can be submitted for continuing education credit.